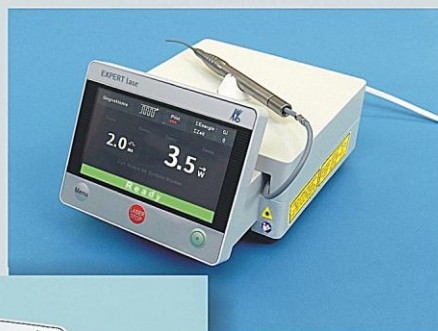
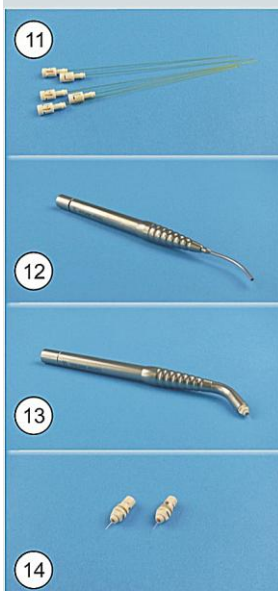


MASTER Iase EXPERT Iase



Short Instructions for Use

The present short Instructions for Use cannot substitute for the Instructions for Use of the unit and the Instructions for Use of the accessories!



Service Support

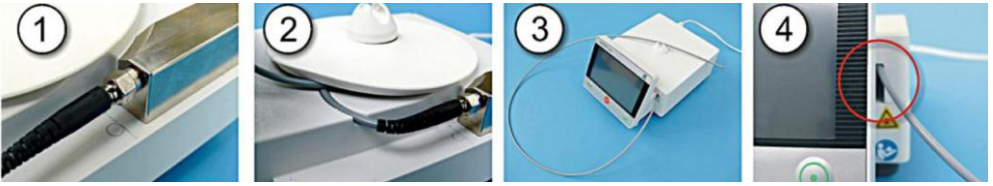
KaVo Dental GmbH
Bahnhofstraße 20
D-88447 Warthausen

Phone: +49 7351 56-2800

Mail: Service.Laser@kavo.com

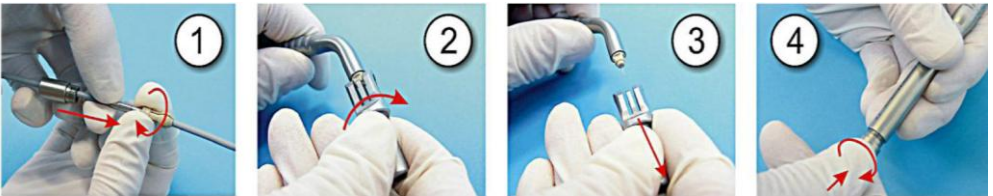
Order number of the present Instructions for Use: 1.010.0274

Connecting the transmitting optical fibre

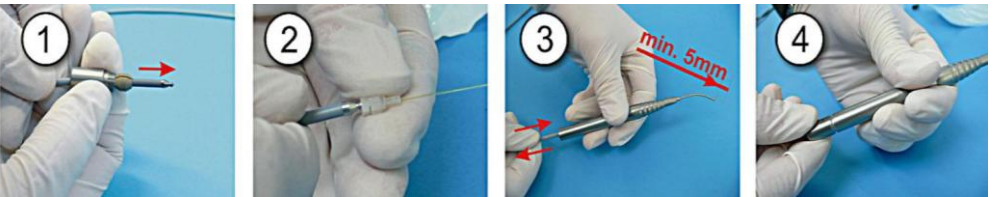


The part of the transmitting optical fibre that is not needed for the treatment should be kept below the fibre reel!

Installing the Saphir-Tip handpiece



Installing the BareFiber Tip handpiece



Switching the device on

- ① Touch the On button .
- ② Enter the PIN using the numbers bar (the factory-set PIN is 1234).

Each laser unit that is not being used must be protected from unauthorised use.
Change the factory-set PIN!

Registering the wireless foot switch

The wireless foot switch must be registered with the unit at each start-up!
(this function can be changed by the service staff)



- ① Touch the lower status bar.
 - ② Follow the instructions on the screen.
 - ③ Confirm the registration by touching OK.
- The unit switches to therapy mode.
The wireless foot switch symbol is displayed.

Setting the parameters, triggering the laser



Make your selection by touching one of the elements or values shown. The colour of the selected element or value changes from white to green.

The slider scale is displayed for the selection of a parameter.

Laser parameters can be changed directly by touching a value shown on the slider scale. Other values can be displayed through dragging over the slider.

See the Instructions for Use of the unit with regard to the setting of parameters and triggering of the laser with the wireless foot switch.

For contact cutting, blacken the Saphir-Tip or the BareFiber-Tip!

1 Select the indication.

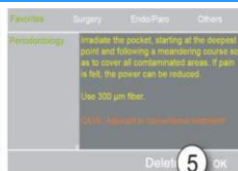
2 Switch the unit to "Ready" (touch the laser bar).

3 Press the foot switch.

Optional settings:

- a Pulse shape
- b Pilot
- c Application time
- d Pulse duration / pulse pause
- e Power

Saving favorites



1 Touch the indication element.

2 Select the desired specialty.

3 Select the desired indication.

4 Touch "Save in favorites".

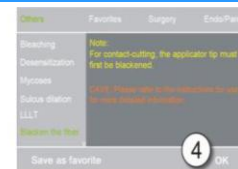
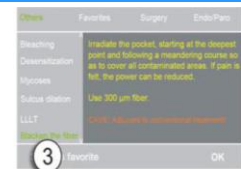
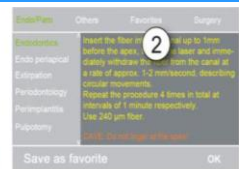
5 Confirm by touching "OK".

The unit switches to therapy mode.

Each indication can be saved with factory settings and individual settings (including pilot).

An indication that is already present in the list of favorites, will be over-written.

Selecting favorites



1 Touch the indication element.

2 Touch "Favorites".

3 Select the indication from the list of favorites.

4 Confirm by touching "OK".
The unit switches to therapy mode.

The indication element is displayed in yellow in therapy mode if you use the indication from the list of favorites.

Description



Control panel

- 1 Laser-Stop:
Emergency shut-off of the unit
- 2 Turns the device on and
provides access to menu settings
- 3 Turns the device on and
toggles "Standby" <-> "Ready"
- 4 Touchscreen

Unit

- 5 Connector for transmitting optical fibre
- 6 Fibre reel
- 7 Handpiece and/or fibre holder
- 8 Foot switch, cable-type
- 9 Foot switch, wireless - wireless foot switch
(version of the unit equipped with wireless
foot switch)
- 10 Charger (version of the unit equipped with
rechargeable battery)

Accessories

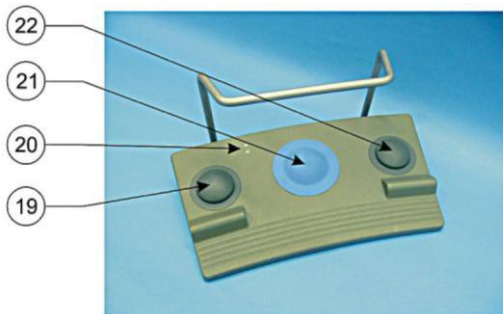
- see figures shown on the first page
- 11 BareFiber-Tip
 - 12 Handpiece for BareFiber-Tip
 - 13 Handpiece for Saphir-Tip
 - 14 Saphir-Tip

Connectors

- 15 Foot switch connector
- 16 Interlock (safety lock)
- 17 Power cable
- 18 Charger connector
(version of the unit equipped with
rechargeable battery)

Wireless foot switch

- 19 Toggles the unit
"Standby" <-> "Ready"
- 20 LEDs being on indicates the
"Ready" status of the unit
- 21 Triggers the therapeutic laser beam.
- 22 Switches the power the unit to next higher
level.



	Contin. (cw): The set laser power is emitted for as long as the foot switch is pressed.		Interval: The set laser power is emitted at a pre-selected ratio of pulse duration/pause for as long as the foot switch is pressed
	Continuous with set application time: The set laser power is emitted for a pre-set period of time when the foot switch is pressed.		Interval with set application time: The set laser power is emitted at a pre-selected ratio of pulse duration/pause for a pre-set period of time when the foot switch is pressed
	Peak: The maximal power of the unit (Pp) is emitted at a pre-selected ratio of pulse duration/pause for as long as the foot switch is pressed. Pulse duration (tp) and average power (Pa) are set. The system automatically calculates the required pulse pause (ti) from the selected pulse duration (tp), average power (Pa), and the maximal power (Pp) in µs accuracy. e.g.: tp=1ms, Pa=5W, Pp= 10W → ti = 1ms		